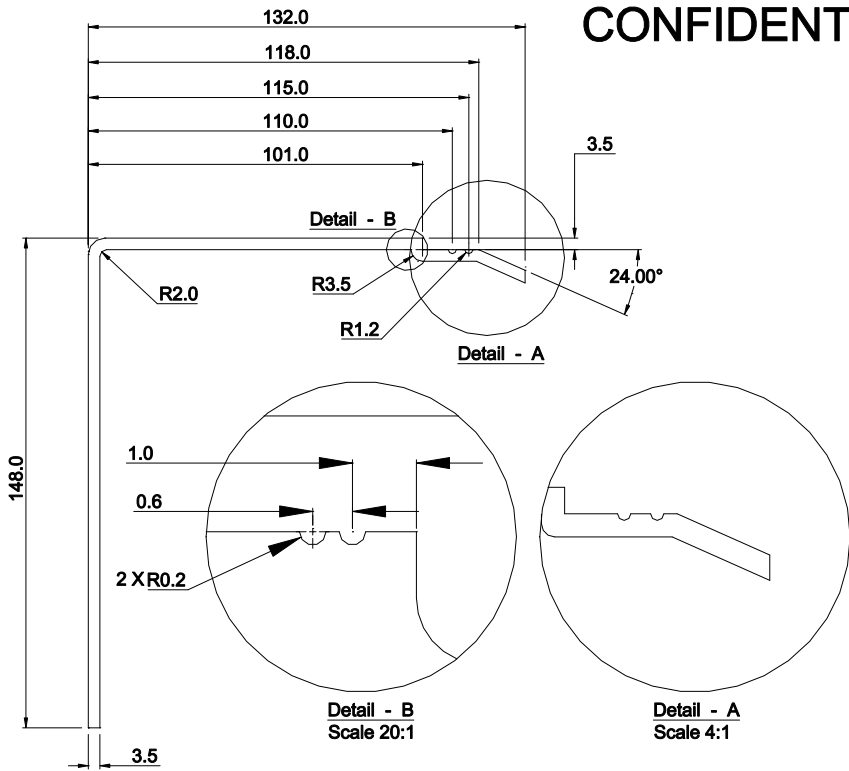


CONFIDENTIAL



- Notes:**
- 1- Material Aluminum 6061-T5 (OR) Aluminum 6063-T5
 - 2- Material 3.5mm Constant Thickness.
 - 3- Max Material Length = 20 FEET (6096 mm)

E	000000			
D	000000			
C	000000			
B	27/12/2007	Details B - ID Marking Added	SS	SS
REVISEN #	DATE	REVISION DESCRIPTION	BY	CHK

ECLIPSE TECHNOLOGIES INC.
CONFIDENTIAL AND PROPRIETARY

THIS DOCUMENT CONTAINS ECLIPSE TECHNOLOGIES CONFIDENTIAL INFORMATION, AND IS LOANED TO THE RECEIVER IN CONFERENCE. THE RECEIVER AGREES THAT, EXCEPT WITH ECLIPSE TECHNOLOGIES PRIOR WRITTEN PERMISSION, IT WILL NOT USE OR DISCLOSE TO OTHERS THE DOCUMENT OR ANY COPY OR THE INFORMATION THEY CONTAIN.

1) NOT COPY OR REPRODUCE THE DOCUMENT IN WHOLE, OR PART.
2) UPON COMPLETION OF THE NEED TO RETAIN THE DOCUMENT, OR UPON DEMAND, RETURN THE DOCUMENT, ALL COPIES AND ALL RELATED MATERIAL.

DO NOT SCALE DRAWING
DIMENSIONS ARE IN MILLIMETERS
REMOVE ALL BURRS AND SHARP EDGES
TOLERANCES: UNLESS OTHERWISE NOTED

ONE DECIMAL ± .1 FRACTIONAL ±
TWO DECIMAL ± . TWO
THREE DECIMAL ± . THREE
ANGULAR ± .

DRAWING TITLE				
Back Plate				
DRAWN BY	APPROVED BY	DATE	DRAWING NUMBER	REVISION
SS	SS	06/07/07	ET-101	B